

DV1™ Viscometer

The only viscometer in its class to offer continuous sensing and data display at such a low price!

User Configuration Display

- User choice of most important parameter is displayed in larger font size
- Choice of static or scrolling display mode

Displayed Info:

- Viscosity (cP, P, mPa•s, Pa•s)
- % Torque
- Speed/Spindle
- Temperature (°C or °F)
if RTD Temperature Probe is purchased

Choice of Multiple Languages

English, French, German, Portuguese, Russian, Spanish

USB PC interface for use with optional Wingather SQ Software

18 speeds provide great range capability

Optional RTD Temperature Probe DVP-94Y

Direct access to time measurement function (time to torque, time to temperature, time to stop)

Accuracy:
±1.0% of range

Repeatability: ±0.2%

Temperature off-set capability to ±5°C

Automatic Range Calculation:

- Full Scale Range (FSR) at 100%
- Maximum viscosity measured with Spindle/Speed combination

Simplified User interface for more direct access to features

Printing to Dymo® Printer Capability

Stylish Model G Base



What's Included?

- Instrument
 - 6 spindles (RV/HA/HB) (p45) or 4 spindles (LV) (p45)
 - Spindle Guard Leg*
 - Lab Stand (Model G) (p50)
 - Carrying Case
- *Not applicable to HA or HB torque models

Optional Accessories

- Wingather SQ Software ▶
- RTD Temperature Probe
- Ball Bearing Suspension (RV/HA/HB) (p50)
- EZ-Lock Spindle Coupling System (p50)
- Viscosity Standards (p52)
- Protective Keypad Covers (p51)
- Dymo Printer (p51)
- RV/HA/HB-1 Spindle (p45)
- Quick Action Lab Stand (p50)
- Temperature Bath (p33-35)
- Small Sample Adapter (p38)
- UL Adapter (p40)
- Thermosel (p36)
- Helipath Stand with T-bar Spindles (p42)
- Spiral Adapter (p44)
- DIN Adapter (p44)
- Quick Connect/Extension Links (p49)
- Vane Spindles (p43 & 48)

MODEL	VISCOSITY RANGE cP(mPa•s)		SPEEDS	
	Min.	Max.	RPM	Number of Increments
DV1MLV	1*	2M	.3-100	18
DV1MRV	100	13M	.3-100	18
DV1MHA	200	26M	.3-100	18
DV1MHB	800	104M	.3-100	18

* Minimum ranges can be extended to as low as 1 cP with the use of accessories

** Standard torque range values

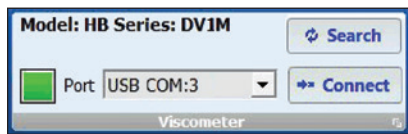
M = 1 million cP = Centipoise mPa•s = Millipascal•seconds

Wingather SQ Software Optional (see p14 for more details)
 DATA COLLECTION SOFTWARE TO COLLECT, ANALYZE AND RECORD TEST DATA

Wingather software provides an easy way to gather data and plot graphs while creating permanent test records.

Important features and benefits enhance operator versatility in performing viscosity tests:

- Multiple test modes to enhance data collection
- Follow up events including analysis through math models which calculate yield stress and plastic index
- Automatic sample numbering
- Data graphing of up to 20 data sets concurrently
- Data export to spread sheet format (Excel®)

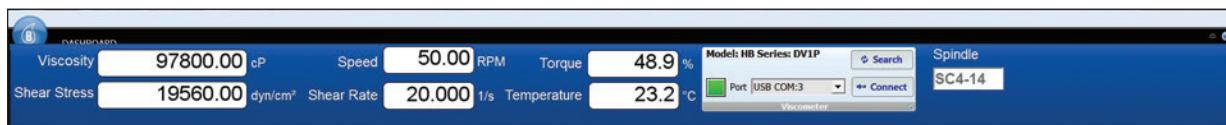


The DV1 Viscometer communicates to the PC through USB A port. The interface cable is supplied with Wingather SQ Software. Successful communication is indicated by a green light beside the port designation.

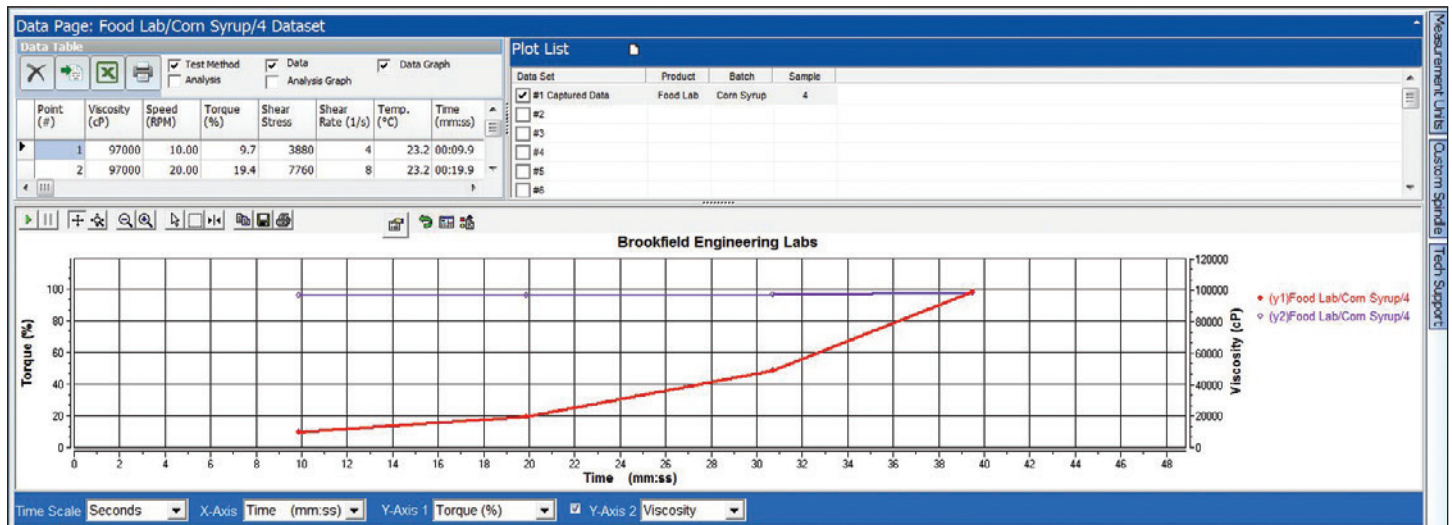


DV1CIP

The DV1 is available in a Wells/Brookfield Cone & Plate Version
 Must be ordered when instrument is first purchased. (p20)



Dashboard shows current test information.



Data table and graph shows test record at a glance.